

The EL-2664 is a carbon monoxide (CO) gas alarm with an integrated transmitter designed for use with Electronics Line 3000's supervised wireless range of receivers. The electro-chemical sensor detects carbon monoxide, measures the concentration, sounds a local alarm and transmits an alarm to the control panel.

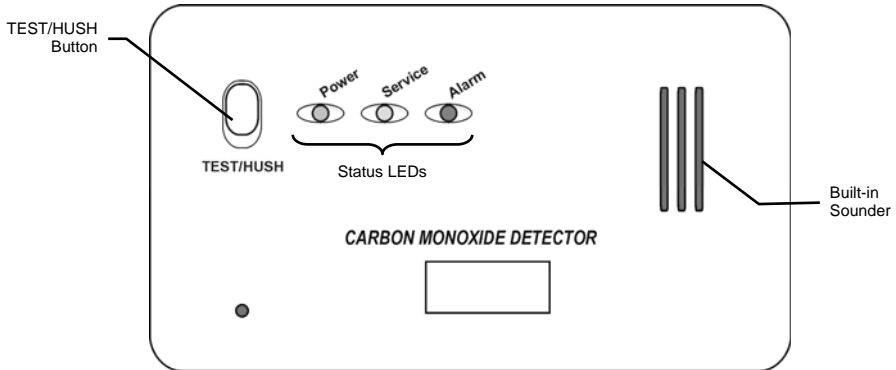


Figure 1: EL-2664

IMPORTANT: CO detectors can help save lives! Carboxyhemoglobin produces flu-like symptoms. For example, headaches, fatigue, nausea, dizzy spells, confusion and irritability. Since these symptoms are similar to the flu, carbon monoxide poisoning can often be misdiagnosed. As level of COHb rise, victims suffer vomiting, loss of consciousness and eventually brain damage or death.

Mounting Location

Since CO gas moves freely in the air, the suggested location is in (or as close as possible) to the sleeping areas in the home. This is because the human body is most vulnerable to the effects of CO gas when asleep. For maximum protection, a CO detector should be located outside primary sleeping areas and on each level of your home – see Figure 2.

The following are potential sources of carbon monoxide gas in the home:

- Blocked chimneys
- Gas or oil furnaces
- Garages
- Fireplaces
- Water heaters
- Indoor grills
- Range hoods
- Clothes dryers
- Portable heaters

Do not place the detector in the following locations:

- Areas where the temperature may drop below 5°C (40°F) or exceed 37°C (100°F).
- Near paint or thinner fumes.
- Within 1.5m (5') of open flame appliances such as furnaces, stoves and fireplaces.
- In exhaust streams from gas engines, vents, flues or chimneys.
- Do not place in close proximity to an automobile exhaust pipe; this will damage the detector.

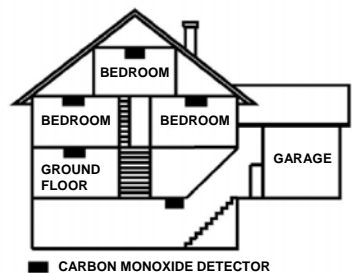


Figure 2: Mounting Location

Installation Instructions

1. Remove backplate from the rear of the detector as shown in Figure 3.
2. Open the battery compartment located on the rear side of the unit and insert three AAA alkaline batteries; the green Power LED flashes once every minute.
3. Set the control panel's receiver to Registration mode.
4. Press the TEST/HUSH button on the EL-2664.
5. Wait for five seconds and press the TEST/HUSH button again.
6. When the receiver indicates that the transmitter has been registered successfully. Write the number of the zone and the transmitter number (if applicable) on the sticker provided and affix the sticker inside the front cover for future reference.
Note: Alternatively, the EL-2664 can be registered to the receiver by manually entering the transmitter's serial number.

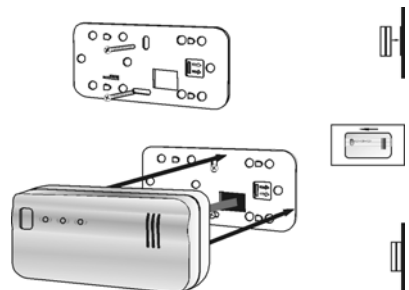


Figure 3: Mounting the Detector

7. Choose a mounting location according to the guidelines in the previous section.
8. Test the transmitter to determine the suitability of your chosen mounting location. To do so, place the detector in the exact mounting position and press the TEST/HUSH button making certain that the transmissions are successfully received. If necessary, relocate the transmitter to a better position and repeat the test.
9. Attach mounting plate to wall.
10. Attach the EL-2664 to the wall with the supplied screws.

What to do when CO Gas is Detected

In case of harmful levels of CO gas detection, the detector will sound an alarm, flash the red Alarm LED and send an alarm transmission to the control panel. When an alarm occurs, take the following actions immediately:

- Evacuate the premises immediately and check that everybody is accounted for.
- Check if anyone is experiencing the effects of carbon monoxide poisoning such as headache, dizziness, nausea or any other flu-like symptoms and call the fire department immediately. Do not re-enter the premises until the problem has been corrected and the CO gas has dispersed to a safe level.
- If there are no symptoms of carbon monoxide poisoning, immediately ventilate the premises by opening windows and doors. Turn off all fuel burning appliances and call a qualified technician or your utility company to inspect and repair any problems before restarting appliances.

In the event of an alarm, you can silence the detector by pressing the TEST/HUSH button. The red Alarm LED shall continue to flash and the detector will sound a short tone every 30 seconds. This is called "Silent" mode. After eight minutes, Silent mode is automatically terminated.

WARNING: Normally, an activation of the detector indicates the presence of CO gas. If not responded to, the presence of carbon monoxide can be fatal. A list of sources of carbon monoxide appears on the previous page in the Mounting Location section.

CAUTION: This unit will only indicate the presence of carbon monoxide at the sensor. Carbon monoxide may be present in other areas of the premises.

Testing the Detector

To test the detector, press the TEST/HUSH button; the detector sounds tones, flashes all three LEDs and sends an alarm transmission to the control panel.

Troubleshooting

When the batteries are low, the detector sends a low battery transmission to the control panel. Remove the detector from its mounting plate, remove the battery compartment cover and replace the three alkaline batteries (size AAA).

In the case of malfunction, the detector sounds tones and flashes the orange Service LED indicating that the detector must be replaced.

Alarm Activation (based on EN 50291 requirements)

A full alarm is activated under the following conditions:

- Between 60 and 90 minutes at exposures of 50ppm.
- Between 10 and 40 minutes at exposures of 100ppm.
- Within 3 minutes at exposures of 300ppm.

No warning under the following conditions:

- For 120 minutes at exposures of 30ppm.
- For 60 minutes at exposures of 50ppm.
- For 10 minutes at exposures of 100ppm.

Technical Specifications

Power Supply: 3 x 1.5V Alkaline Batteries (AAA)
Current Consumption: 8mA (alarm), 40µA (standby)
Antenna: Built-in Internal Whip
Transmitter Frequency: 868.35, 433.92 or 418MHz FM
Transmissions: Alarm, AC Loss, Low Battery, Supervision
Audible Alarm: 85dB at 3m (10')

LEDs: Green (Power On – flashes once per minute)
Red (Alarm)
Orange (Malfunction)
All three LEDs (Test Mode)
Operating Temperature: -10 to 49°C
Dimensions: 80 x 140 x 46mm

Sparks Electrical Wholesalers Ltd
Infinite Prime Distributors in London
www.sparksdirect.co.uk

020 7263 8007