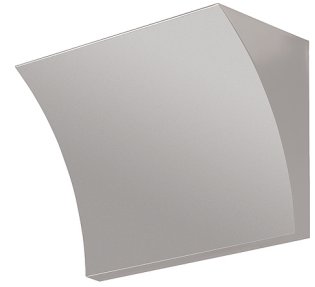


# FLOS

## POCHETTE

<b>Mounting</b>	Wall
<b>Lamps description</b>	1 x MAX 160W R7s HDG
<b>Environment</b>	Indoor
<b>Finish</b>	Chrome, Grey, Shiny white
<b>Technical description</b>	Wall lamp providing indirect light. Pressure die-cast Zamak alloy structure. Molded steel, galvanized white wall attachment containing the wall attachment system as well as the electrical devices. Pochette has a single dimmable light source in the traditional recessed series.



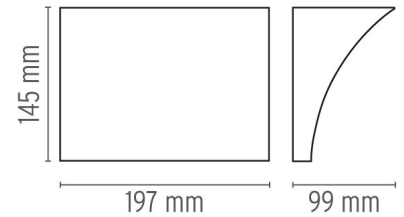
### Pochette

designed by Rodolfo Dordoni

Wall lamp providing indirect light

- F9700020 Grey
- F9700057 Chrome
- F9700009 Shiny white

### DIMENSIONS



### PHYSICAL

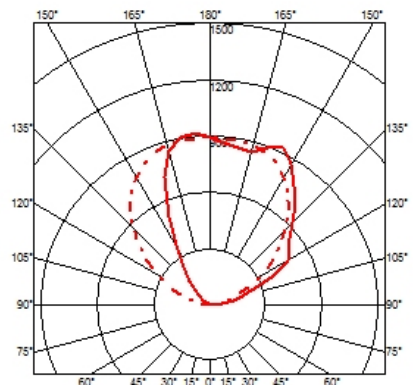
<b>Supply</b>	Terminal block
<b>Construction material</b>	Zamak
<b>Weight (kg)</b>	1.6
<b>Minimum distance from illuminated object (mm)</b>	800



### CERTIFICATIONS



IP
20



## Pochette . Lamps



### HDG 160W R7s

**Lamp wattage:**

160 W

**Lamp category:**

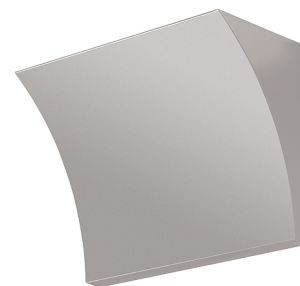
Halogen mains

**Socket:**

R7s

**Lamp type:**

HDG



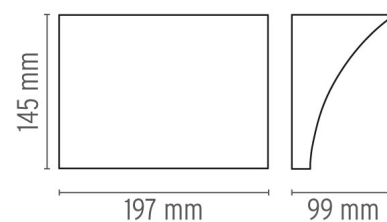
### Pochette

designed by Rodolfo Dordoni

Wall lamp providing indirect light

- F9700020 Grey
- F9700057 Chrome
- F9700009 Shiny white

### DIMENSIONS



### CERTIFICATIONS

