

2 Zone Controller - LR-2RGB

This remote allows you to control 2 different zones in RGB, both independently and simultaneously. It features a touch colour wheel and enables the user to scroll through a multitude of different colour options and a variety of effects as well as dim to a low 5% capacity.



Feature

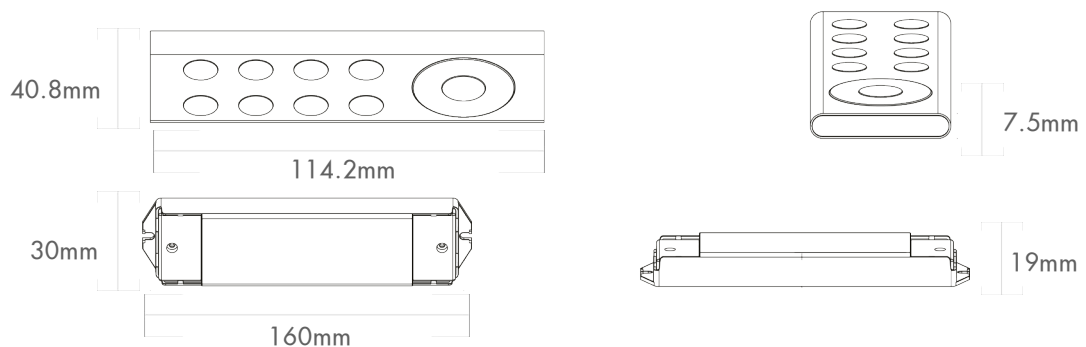
- * 2 zone RGB controller
- * RGB touch colour wheel
- * 5%-100% Smooth Dimming Capacity
- * Colour play mode with adjustable speed
- * Control each zone separately or simultaneously
- * Wireless RF Range of 10-20 meters (Dependent on signal obstacles within the installation area)

Parameter

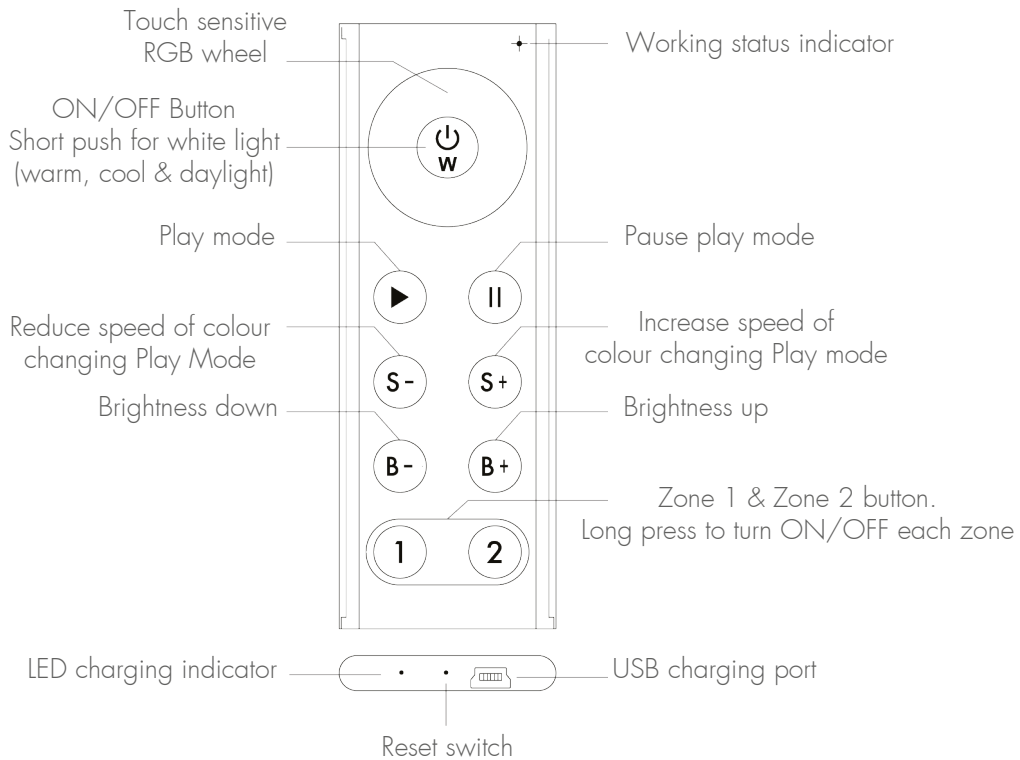
Remote	PART NO.	INPUT VOLTAGE	OPERATION FREQUENCY	DIMENSIONS (mm)	REMARKS
	LR-2RGB	3.6VDC	868MHz	43.8x131.6x24.5	RF Wireless/ USB Charge

Reciever	PART NO.	INPUT VOLTAGE	CURRENT	OUTPUT	REMARKS
	LRR-2RGB	12-36VDC	3x5A	3x(60-180)W	Constant Voltage

Product Size



Controller Layout

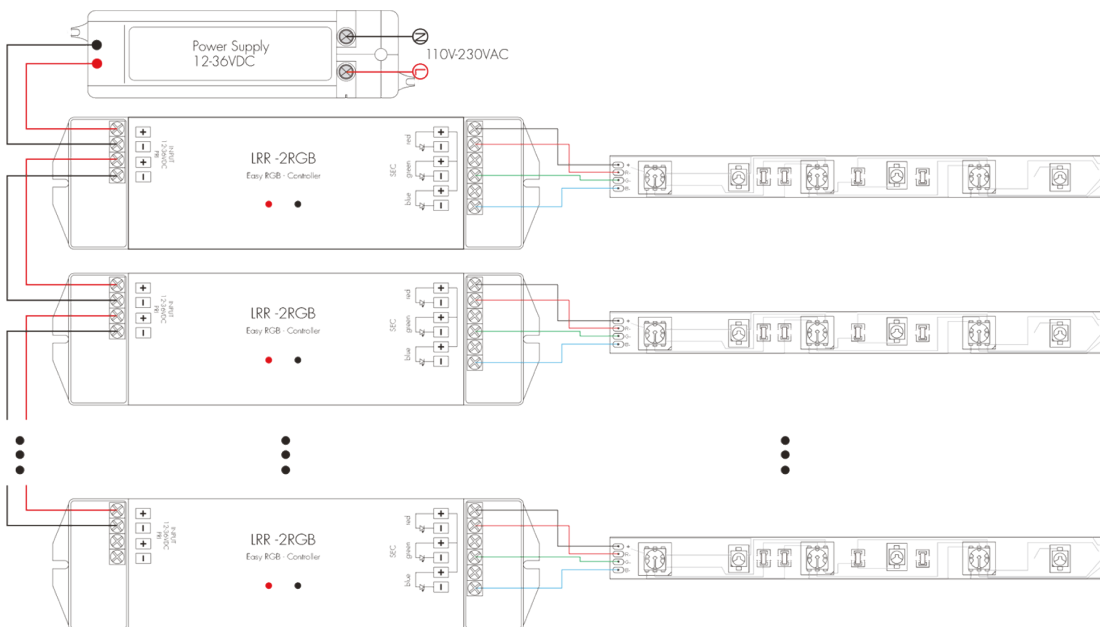


Note: RF technology allows for great flexibility when it comes to controlling simple or complex lighting installations without the need of wiring. There are limitations in some cases due to receivers installed in enclosed electrical boxes or in ceiling voids hence reducing the RF signal strength and the communication range. In order to overcome these RF signal restrictions we suggest the following procedure when synchronising our RF

controllers and receivers:

- * Keep the distance within 10 meters from the controller to the receiver
- * When expanding your lighting, we recommend the use of power repeater's, if synchronization of the additional strips is required.
- * If your installation requires several RF receivers, ensure the 'master' receiver is positioned in the middle.

Receiver Wiring Diagram



Controlling Your LED Strip

a) Ensure the remote is ON and touch the colour wheel to select your desired colour

To control Zone 1

Touch the button ①

Then touch the colour wheel 

To control Zone 2

Touch the button ②

Then touch the colour wheel 

To control Zone 1 and Zone 2

Touch buttons ①&②

and then touch the colour wheel 

Doing this will allow you to simultaneously control colours in both zones

b) Colour Changing Play Mode

Ensure the remote is ON and select the zone(s) you wish to have the colour Play mode run by pressing Zone 1 ① and/or zone 2 ② then press the Play mode button ▶

It is possible to pause the Play mode on your desired colour by pressing the pause button ⓖ

c) Adjust the brightness of the LED Strip

There are 8 levels of brightness, ranging from 5% - 100%

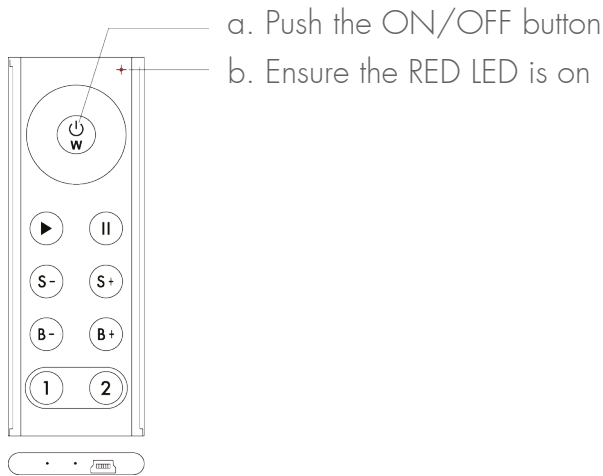
The brightness levels can be adjusted in both static and Play mode by pressing the B- to reduce and B+ to increase brightness.

d) Adjusting the speed of Play Mode

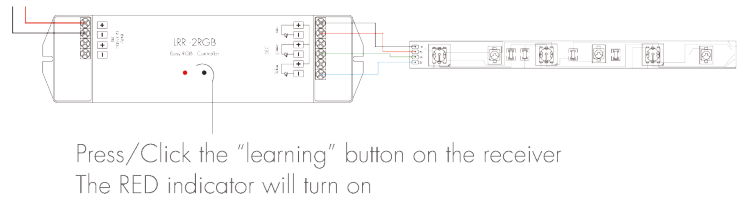
Under lay mode, you will be able to slow down or speed up the sequence by pressing S- to slow down and S+ to speed up the play mode.

Synchronising The Remote To Receiver

1) Activate the 2 zone remote:

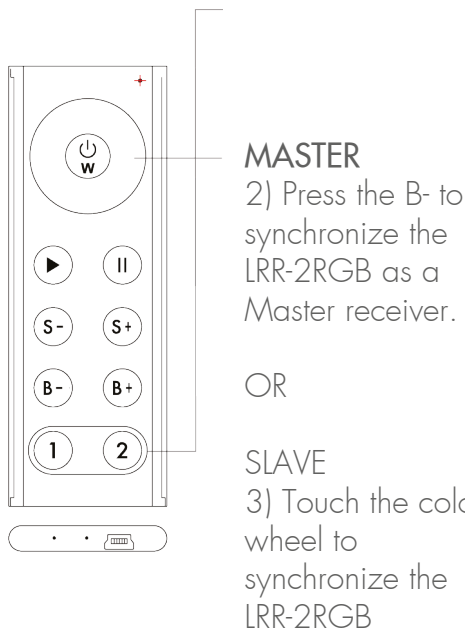


2) Ensure the receiver has power.
Press the learning button on the receiver.



3) Ensure the remote is still active (red lighting indicator ON) and press the zone you wish to allocate the LRR-2RGB receiver. Straight after, define the receiver as a Master or Slave*

1) Press the desired zone (1 or 2) to allocate



4) To synchronise the same receiver to another zone or alter the receiver from a MASTER/SLAVE, just repeat the above process.

* Allocating the receiver as a master or slave is important to ensure the LED Strip and receivers are fully synchronized. Failure to allocate accordingly can result in the LED strips and receivers being out of sync. There can be one master receiver per zone.

Safety and Warnings

Products must be installed and serviced by qualified electrician

- * Please ensure this product is mounted in a water proof enclosure
- * Always ensure products are mounted in areas with adequate ventilation to avoid any overheating.
- * Please ensure outputs of any power supplies used in conjunction with this product comply with its working voltage.
- * Never install product whilst connected to power and double check connections before switching on to avoid short circuits.
- * For any further help or advice please contact Teucer on 0207 350 4429 or find us online at www.teucerled.co.uk

Warranty Agreement

- * 3 Year Warranty: This warranty is for free repair and replacement of the product and covers manufacturing faults only.
- * Any faults beyond warranty boundaries are subject to charge for parts and labour.

Warranty Limitations

- * Any defects caused by negligence, high temperature, humidity or harmful chemicals.
- * Damage caused by transport, Fire or abnormal voltage surges.