

Accessories

MAINS 230V~

Surface Mount Pattress with Relay and Battery Backup

Model Ei 128RBU

- Surface mount Pattress
- Built in 5A Relay with Pulse or Continuous modes of operation
- Rechargeable lithium battery back up
- For use with Ei140 and Ei160RC series Smoke and Heat Alarms
- Facilitates bulky wiring and conduits



Product Description

The Ei128RBU Pattress has an integral relay that is activated when the Smoke/Heat Alarm connected to the Ei128RBU enters alarm mode.

The relay contacts are isolated and are rated at 250VAC, 5A resistive, and can be used for signalling, turning on lights and sirens or activating door release devices etc.

The Ei128RBU has an additional socket for connecting to the "R" spade terminal on the Ei161R or Ei166R Smoke Alarm. This socket can be used for remote control of the attached Alarm, such as Test/Hush via the Ei152 or a MCP400 Manual Call Point.

The Ei128RBU Pattress is designed to be used with mains powered easi-fit Smoke and Heat Alarms. In addition, the Ei128COV is a plastic lid for the Ei128RBU that allows the unit to be sited remotely to the Smoke or Heat Alarm, and will also allow non Easi-Fit Alarms to be connected to the Ei128RBU

The Ei128RBU Pattress is designed so that any of the alarms listed above will fit on top of the Ei128RBU

The Ei128RBU Pattress must only be used with one of the Smoke/Heat Alarms listed above – otherwise the unit will not comply with the mandatory safety regulations.

Operation

- The Ei128RBU has an internal switch that selects Pulse or Continuous mode of operation of the relay
- During periods of main failure, the integral rechargeable lithium battery back up will allow the relay to continue functioning
- When connected to either the Ei152 Test/Hush Switch or MCP400 Manual Call Point via the "R" spade terminal, the remote control device will have direct control of the Ei161R or Ei166R Smoke Alarm connected to the Ei128RBU
- Mount the unit in accordance with the siting instructions in the Smoke/Heat Alarm instruction leaflet
- After connecting all of the relevant wiring, simply screw the Smoke/Heat Alarm to the top of the Pattress



Shannon Free Zone, Shannon, Co. Clare, Ireland.
Ph.+353 61 471277 Fax.+353 61 471053
Email. eielectronics@eiltid.ie
Web: www.eielectronics.com

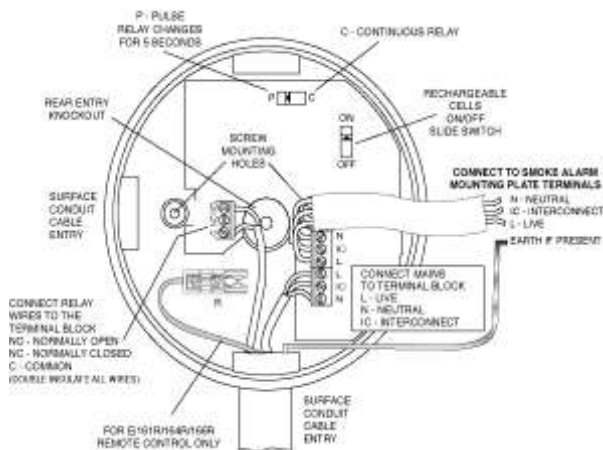
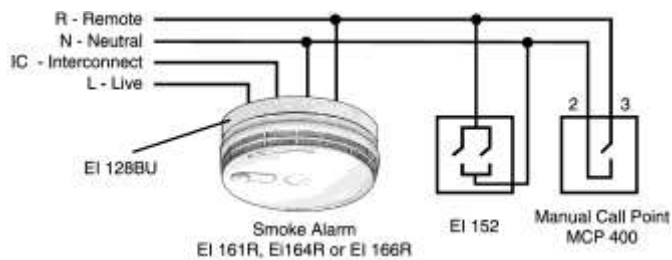
Model Ei128RBU

Technical Specification

Supply Voltage:	240V AC	Fixing:	Screw fixings supplied
Battery back up:	Rechargeable lithium cells	Plastic material:	UL94VO flame retardant
Relay Contacts:	250VAC, 5A resistive	Dimensions:	141mm x 21mm
Temperature Range:	0 to 40°C	Weight:	160g
Humidity Range:	0% to 90% Relative Humidity	Warranty:	5 year (limited) warranty
Interconnect:	Up to 12 interconnected mains powered easi-fit smoke or heat alarms		

Specifications are subject to change

Installation



Important Precaution:

Do not install the actual smoke/heat alarm itself in new or renovated buildings until all work is completed (including floor coverings) and the building has been fully cleaned. The wiring can be installed when appropriate. (Excessive dust and debris from building work can contaminate the smoke chamber and cause problems, and it will also invalidate the guarantee). If it must be installed, cover it completely, particularly around the edges, with a dust cover (eg. a plastic bag), until all cleaning is finished.. Connect wires to the unit as in wiring diagram. All wiring must comply with local codes.

Be very careful about correctly wiring the alarms as mixing Live and Neutral will blow/damage interconnected alarms



Shannon Free Zone, Shannon, Co. Clare, Ireland.
Ph.+353 61 471277 Fax.+353 61 471053
Email. eielectronics@eilttd.ie
Web: www.eielectronics.com