

SecuPlace

Quick Installation Guide



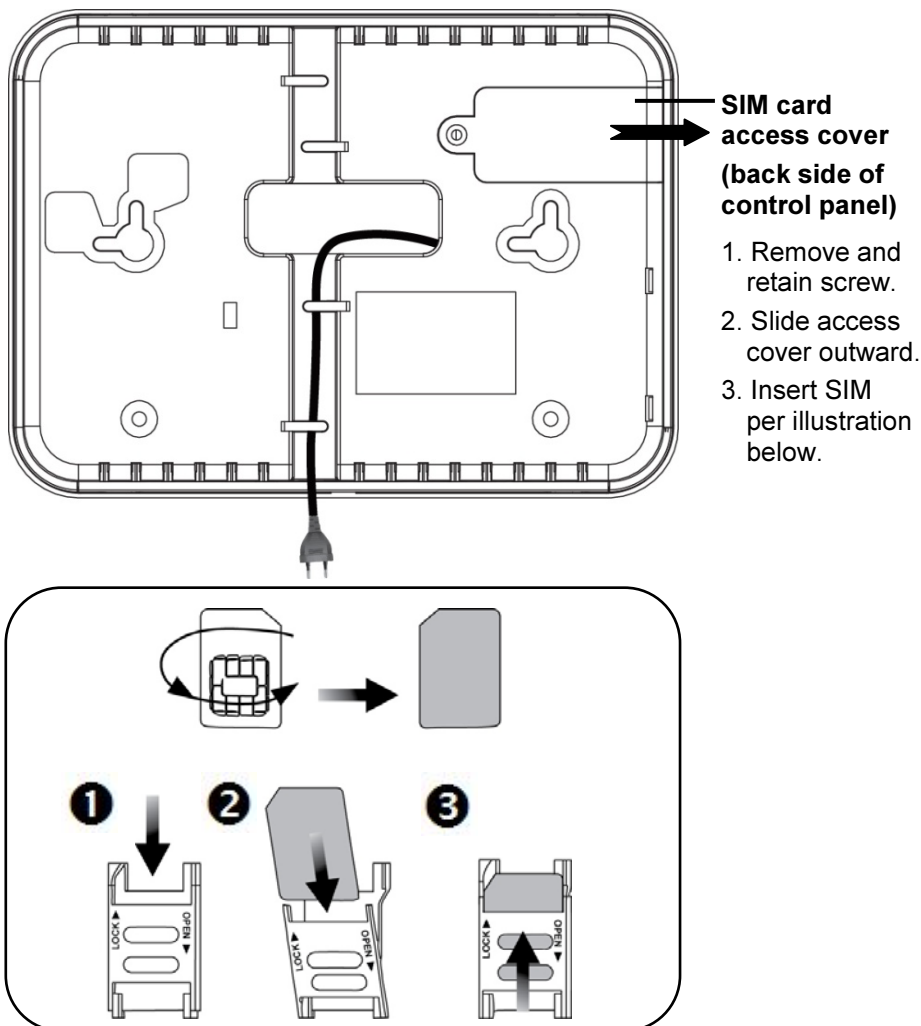
UPGRADING
EVERYDAY
SECURITY

Step 1: SIM & Panel Installation and Power-Up

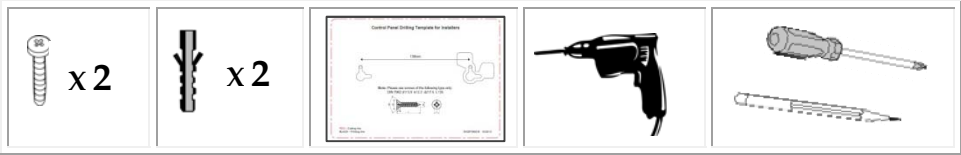
NOTE: The SecuPlace system should be installed by a professional, such as an alarm system engineer or electrician.

If the system does not have a SIM card pre-installed, install it before applying electrical power to the control panel.

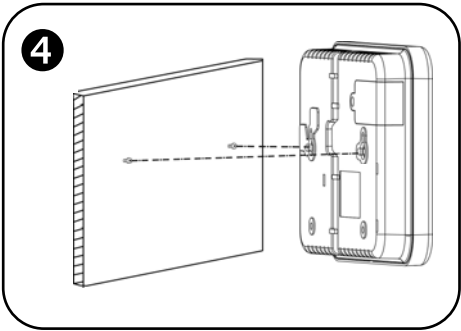
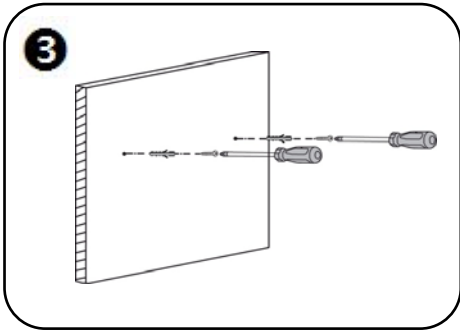
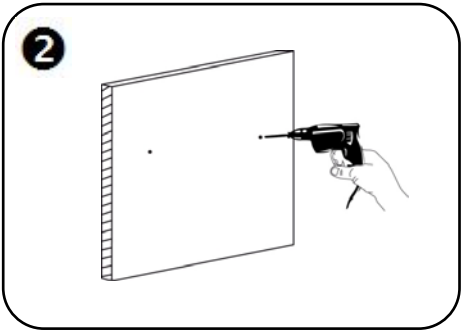
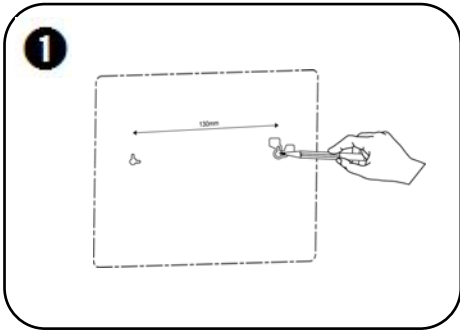
➤ **To insert the SIM card:**







➤ **To mount the control panel:**




⚠ WARNING: Make sure the control panel is not connected to any electrical power supply.



➤ **To power-up the control panel:**

1. Apply electrical power to the control panel with the AC power cable, or at the circuit breaker switch; SELECT LANGUAGE displays on the keypad.
2. Now select the language you wish to display at the control panel. Use   to scroll to the language, and then press .
3. Press  to set for **www.MyELAS.com** (default); INITIALIZING, and then DISARMED display.

NOTE: If “LOW BATTERY,” “SYSTEM NOT READY,” “SYSTEM TROUBLE” or “TAMPER ALARM” display, there are trouble messages (use  to scroll and view them). However, these usually resolve automatically after performing all 4 system installation steps.

Step 2: Registering Kit Components

All components must be registered in order to be recognized by the system.

Your kit comes with pre-registered components. Activate the components to complete the registration process.

➤ To activate the detectors:



NOTE: If a tamper alarm sounds during this procedure, enter the default master code **(1234)** to silence it.

- One-at-a-time, open each detector (see detector illustrations on pages 7 and 10), and then do the following:
 - a. Remove the red plastic divider (battery protector strip) to power-up the detector; a chime sounds indicating the control panel has recognized the detector.
 - b. Immediately put the detector cover back on, so as not to sound the tamper alarm. If the tamper alarm does sound, enter the default master code **(1234)** to silence it.

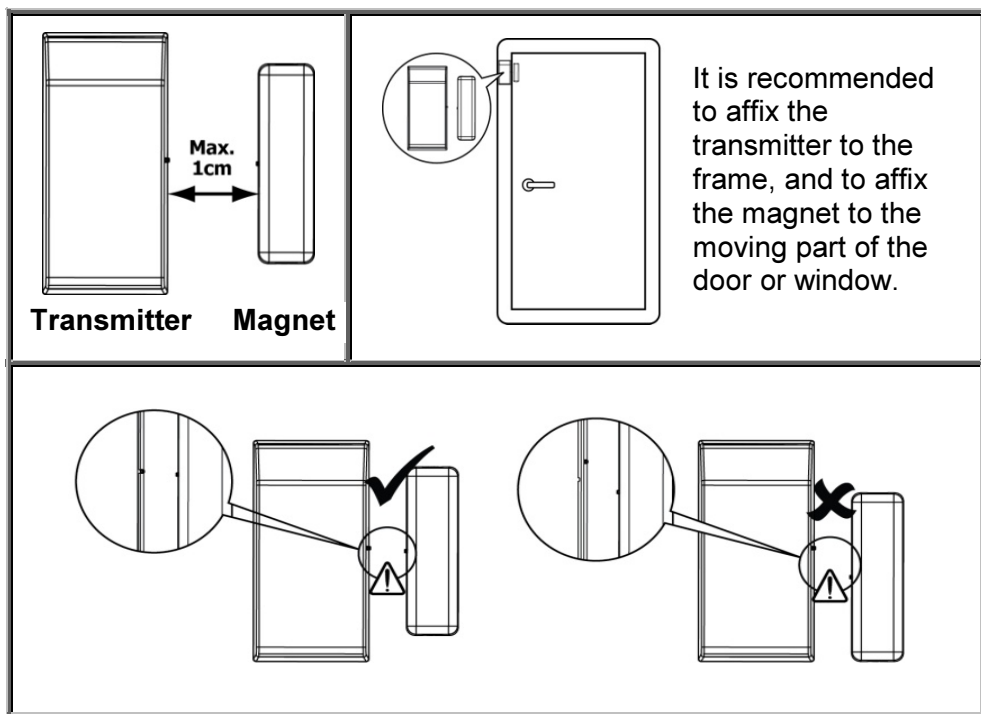
➤ To activate the keyfob:

- Press any keyfob button; a chime sounds indicating the control panel has recognized the keyfob.

Step 3: Installing Kit Components

Installing the Magnetic Door/Window Contact Detector

Mounting Guidelines

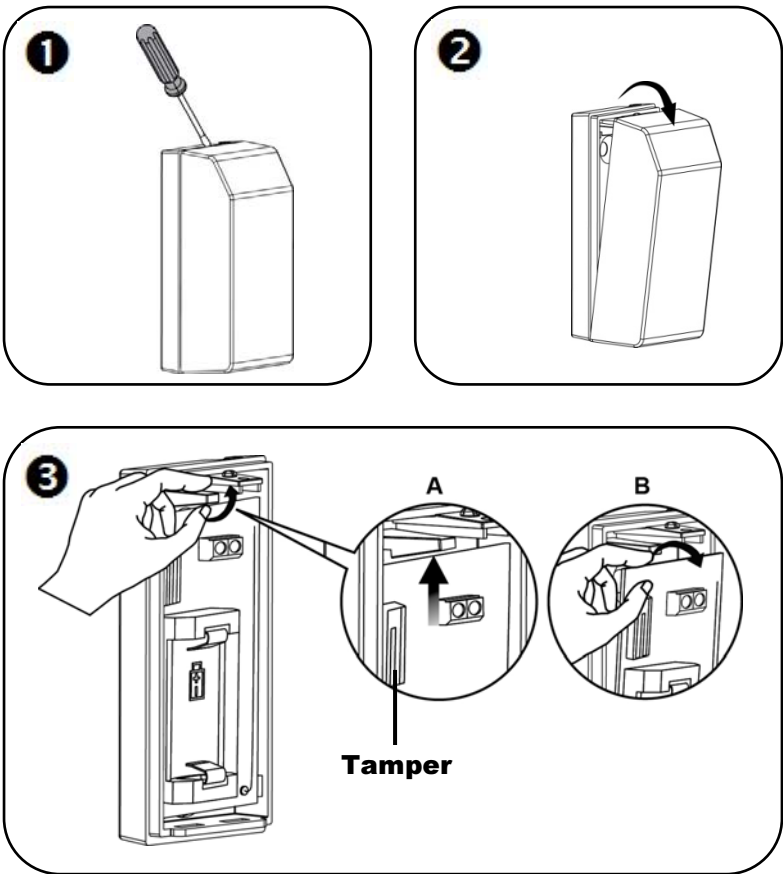


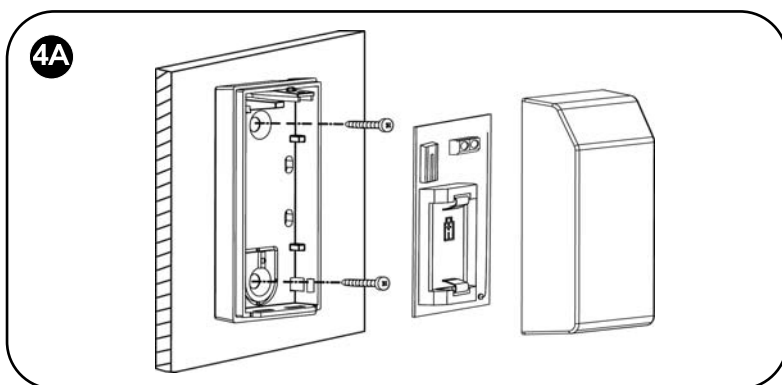
➤ **To install the transmitter and magnet:**



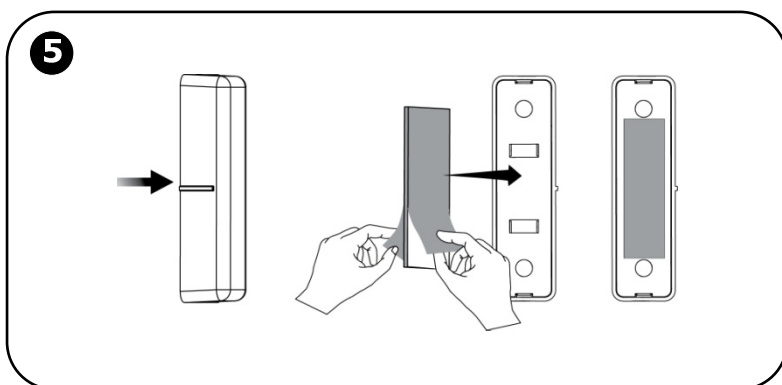
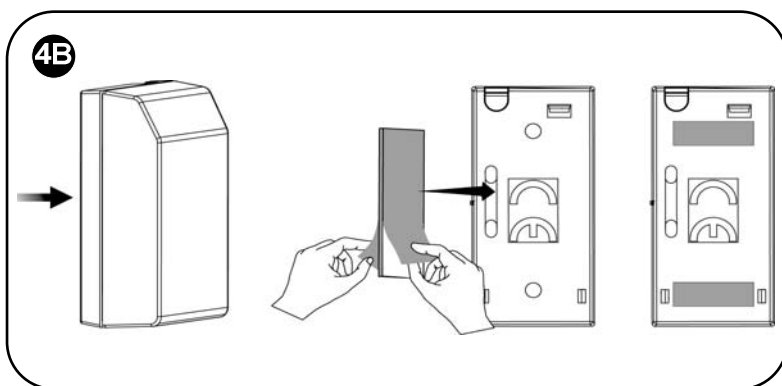
NOTE: If the transmitter is installed using adhesive strips, the back tamper switch will not be operational.

NOTE: For installing the transmitter with adhesive strips, start at step 4B in the following procedure.





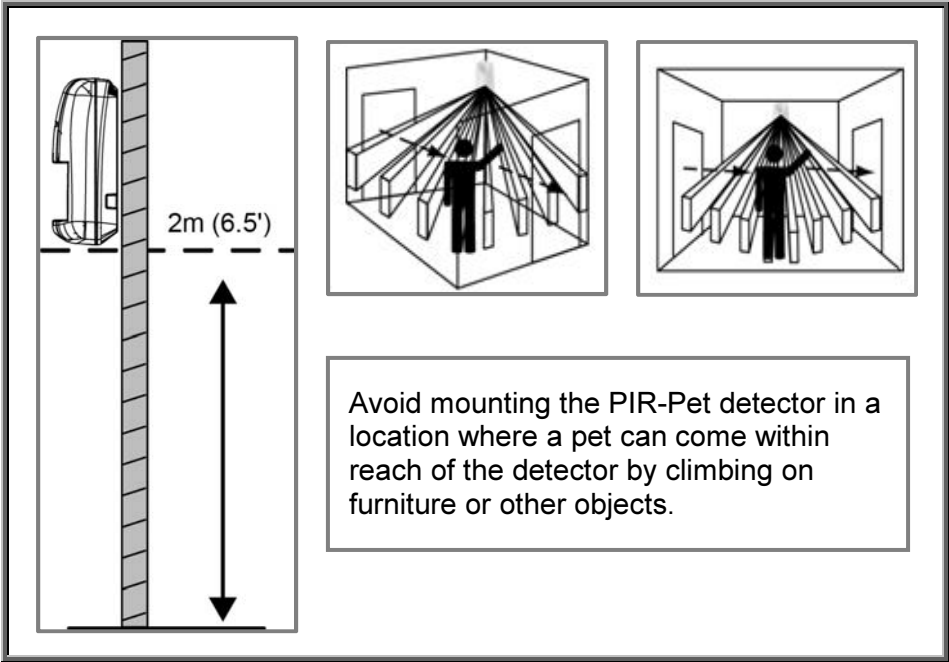
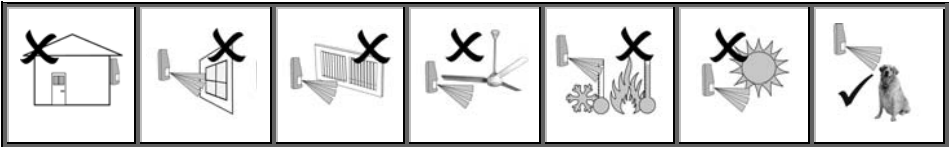
-OR-



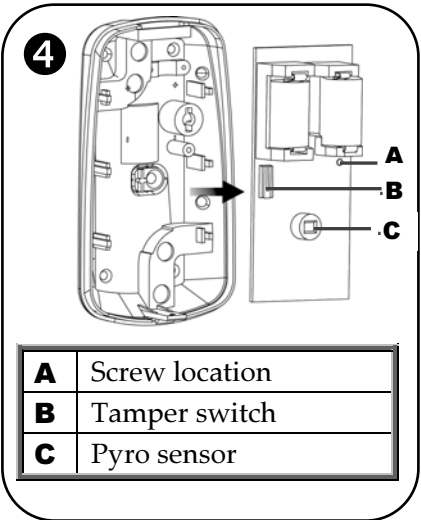
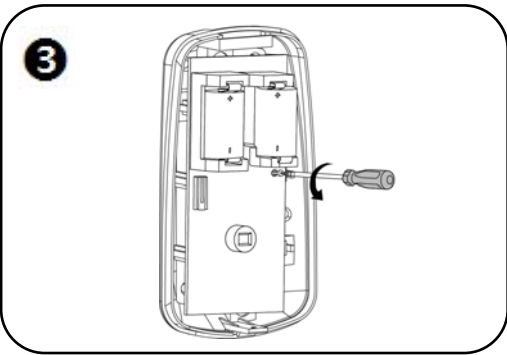
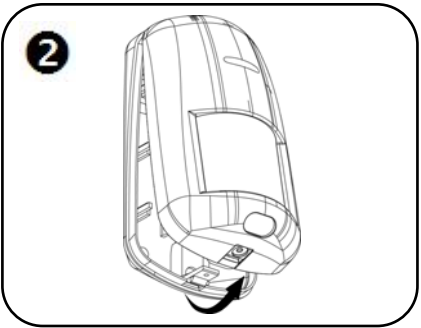
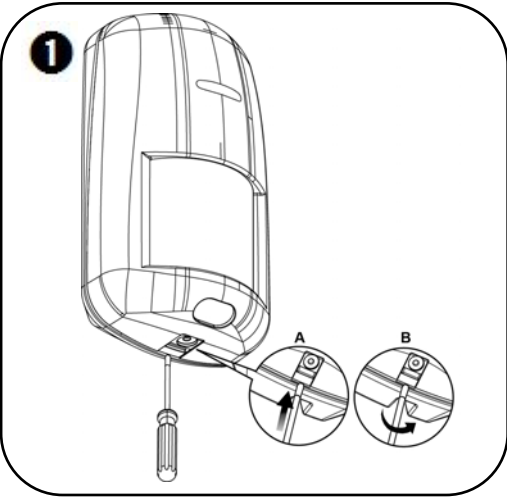
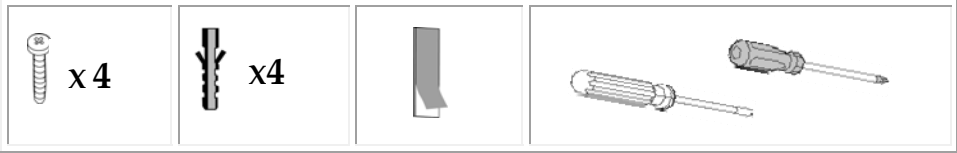
Installing the PIR-Pet Detector

The wireless PIR (Passive Infra-Red) detector detects movement for up to 11 metres (36 feet) indoors. The Pet Immunity (PI) model is designed to not trigger alarms by small pets that weigh up to 36 kilograms (80 pounds).

Mounting Guidelines

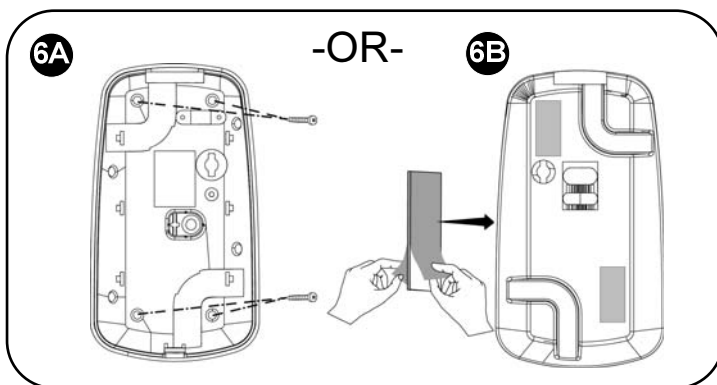
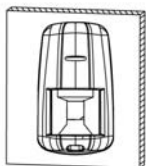
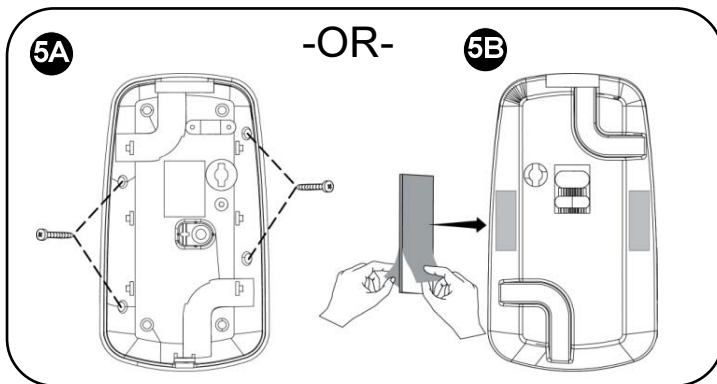
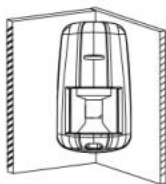


➤ To install the PIR-Pet detector



NOTES:

- Retain the screw for use when re-installing the PCB
- Do not touch the front of the pyro sensor
- An additional battery (purchased separately) can also be used to extend the operational duration (size ½ AA, 3.6 V, lithium)





Step 4: Establishing System Communication

In addition to installing a SIM card, in order to connect via GPRS/GSM, the Access Point Name (APN) must also be configured.

If your default APN is not set to INTERNET (or if you are not sure what it is set to), you can view and edit the APN accordingly. If your cellular provider has provided the APN definitions (user name and password), you will need to enter that information as well.

➤ **To configure the APN:**




1. At the control panel press , and then enter your engineer code (default is 1111).
2. Enter 9 > 5 > 7 > 6 > 1; INTERNET displays by default.



3. Either press  to select the default APN name (INTERNET), or if the cellular provider has supplied a different APN name, enter that instead.


NOTE: For a listing of cellular provider APN definitions, go to:

<http://www.electronics-line.com/content/apn-list> or



4. Use   to move from character to character on the display (or wait a second after entering a character to automatically move to the next space).
 - Press any button repeatedly to toggle between the letters and number printed on it.
 - Press  to delete a character.

5. After your entry, press ; USER NAME displays.
6. If you have not been provided with a user name and password by the cellular provider, then press  to exit. Do not create and enter your own user name or password.

7. If you have been provided with a user name and password by the cellular provider, enter them both (and after each entry press ); GPRS WRITE TMO 25 displays.

8. Press  repeatedly to exit.

Installation Completion

Check the control panel LEDs to confirm the installation is complete. The system is powered-up and ready to operate if:

- The **OK LED** is green and not flashing

-or-

The **OK LED** is yellow and flashing slowly (this indicates the back-up battery is not yet charged, however the system operates on its AC power supply)

- The **System Status LED**  is off


Any other LED indications at the control panel may indicate a system trouble or an alarm. For troubleshooting, download the Quick Start Guide at:




<http://www.electronics-line.com/support/downloads>

Registering Additional Components





For additional components added to the system, register them at the control panel:

➤ To register additional detectors:

1. One-at-a-time, open each detector (see detector illustrations on pages 7 and 10).
2. At the control panel, press and hold  for about 3 seconds (disregard the ENTER USER CODE message) until REGISTER and TRANSMIT 1 display.
3. Remove the detector's red plastic divider (battery protector strip); TRANSMIT 2 displays.

4. Press the detector's tamper switch (see illustrations on pages 7 and 10) and then release it; the automatically-generated zone number and SAVE? display.
5. Press  to save the registration or press  to cancel.
6. Put the detector cover back on.
7. Repeat this procedure for registering the next detector, or if finished, press  repeatedly to exit.

➤ **To register additional keyfobs:**

1. At the control panel, press and hold  for about 3 seconds (disregarding the ENTER USER CODE message) until REGISTER and TRANSMIT 1 display.
2. Press any keyfob button; REGISTER and TRANSMIT 2 display.
3. Press the same keyfob button again; the keyfob number and SAVE? display.
4. Press  to save the registration or press  to cancel.
5. Register this procedure for the next keyfob, or if finished, press  repeatedly to exit.

Certification and Standards Compliance

SecuPlace complies with:

EN 50131-3:2009 Grade 2 Environmental Class II

EN 50136-1-1 and EN 50136-2-1:

PSTN/GPRS/GSM version complies with ATS classification and parameters:

ATS 5 GPRS: D4, M4, T4, S2, I3

ATS 2 GSM: D2, M2, T4, S2, I3

ATS 2 PSTN: D2, M3, T2, S0, I0

Notes

Contacting Electronics Line 3000 Ltd.

Electronics Line 3000 Ltd.

International Headquarters:

14 Hachoma St.

Rishon Le Zion

Israel, 75655

Tel: (+972-3) 963-7777

Fax: (+972-3) 961-6584

EL website: www.electronics-line.com or



RTTE Compliance Statement

Hereby, Electronics Line 3000 Ltd. declares that this product is in compliance with the essential requirements and other relevant provisions of Directive 1999/5/EC. The declaration of conformity may be consulted at www.electronics-line.com



Copyright 2014, Electronics Line 3000 Ltd. All rights reserved.