

POCHETTE UP/DOWN

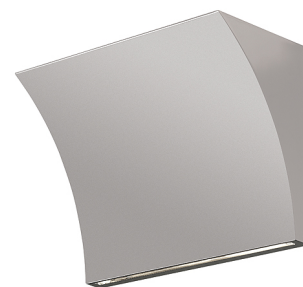
Mounting	Wall
Lamps description	1 x MAX 160W R7s HDG
Environment	Indoor
Finish	Chrome, Grey, Shiny white
Technical description	Wall lamp providing direct/indirect light. Pressure die-cast Zamak alloy structure, matte gray, shiny white or chrome plated finish. Molded steel, galvanized white wall attachment containing the wall attachment system as well as the electrical devices.

ELECTRICAL

Emergency	Without
Voltage (V)	230

PHYSICAL

Supply	Terminal block
Construction material	Zamak
Weight (kg)	1.7
Minimum distance from illuminated object (mm)	800



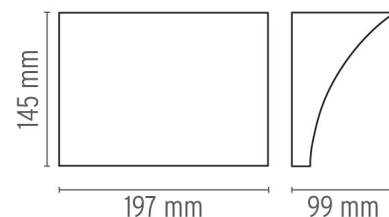
Pochette Up/Down

designed by Rodolfo Dordoni

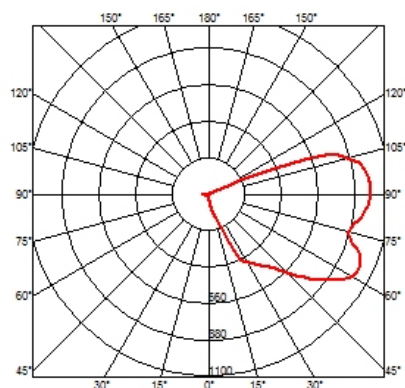
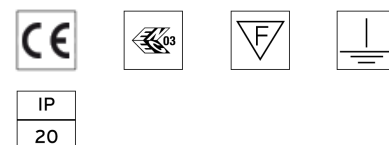
Wall lamp providing direct/indirect light

● F9701020	Grey
● F9701057	Chrome
● F9701009	Shiny white

DIMENSIONS



CERTIFICATIONS



Pochette Up/Down . Lamps



HDG 160W R7s

Lamp wattage:

160 W

Lamp category:

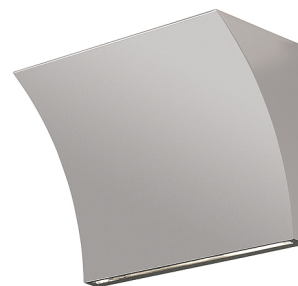
Halogen mains

Socket:

R7s

Lamp type:

HDG



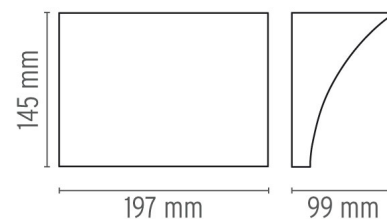
Pochette Up/Down

designed by Rodolfo Dordoni

Wall lamp providing direct/indirect light

● F9701020	Grey
● F9701057	Chrome
● F9701009	Shiny white

DIMENSIONS



CERTIFICATIONS



IP
20

