

**BN Thermic Ltd**  
34 Stephenson Way  
Three Bridges, Crawley  
West Sussex RH10 1TN  
England

**BN** *thermic*

**Tel:** +44 (0)1293 547361  
**Fax:** +44 (0)1293 531432

## SCHG Suspended Ceiling Heater - Fan Assisted

### INSTALLATION AND OPERATING INSTRUCTIONS

Please read carefully

**Packaging** - Unpack the heater and remove all packaging material paying special attention to the inlet and exhaust air openings. Remove the protective film from the front cover - if fitted.

**Location** - The heater is intended for installation in a suspended ceiling mounted within or on the 'tee' bar supports. For optimum results do not fit in ceilings higher than 3m (3kW heater) or 4m (4.5kW heater). As air is only introduced through the front of the unit the heater may be sited anywhere. The air intake and discharge areas must be kept completely clear for a minimum of 1.5m from the front of the heater. In an area using multiple units, heaters should be spread to provide an even heating distribution.

**Installation** - If the diffuser is not fitted the unit may be installed by placing within the 'tee' bar. For reduced sized tiles, i.e. adjacent to walls, windows or doorways the front cover may be reduced in size to 400mm by carefully sawing the front cover. If a diffuser is fitted the four brackets provided should be attached to the side of the heater to enable the heater to be supported by the 'tee' bar and immediately above the diffuser. ONLY the SCH-ECD is recommended. DO NOT use plastic type diffusers as these may be damaged by the heat. Note: Attention should be paid to the adequacy of the ceiling support to ensure the additional weight can be safely accommodated.

**Connections** - Connections to the mains should be wired by a competent and qualified person, by way of a suitable 20 amp switch in accordance with the current regulations and protected by an appropriate fuse or circuit breaker.

(See following wiring diagram)  
THIS UNIT MUST BE EARTHED.

### Operation

#### SCHG-30/SCHG-45

The heater may be manually switched off by a suitably rated device minimum 20 amps, or controlled by a suitably rated remote wall-mounted thermostat. Alternatively it can be controlled by a remote mounted controller model CS-1.

This controller provide 'on'/'off'/'High'/'Low'/'fan only' settings (see wiring diagram).

#### SCHG-30-E

Operates in a similar way to the SCHG-30 in addition the heater incorporates an electronic thermostat with thermostat sensor. The adjustment is achieved by rotating the control knob on the back of the unit clockwise for a higher room temperature, and anti clockwise for lower room temperature. When the desired room temperature is achieved no further adjustments are necessary. The thermostat will cycle as required and the fan will operate continuously to evenly distribute the heated air.

Additionally, it can be controlled by a remote mounted controller, model CS-1. This controller will provide 'on'/'off'/'High'/'Low'/'fan only' settings. (see wiring diagram)

This heater is fitted with a semi-automatic safety device to prevent overheating. The device will isolate the heating element while the fan continues to operate. Should this occur, check and remove any foreign materials around the airways. If the heater fails to operate or the safety cut out operates again, turn off the heater and contact a qualified electrician.

Do not cover this heater as this can cause overheating and may damage the heater.

## **GENERAL MAINTENANCE ON ELECTRIC HEATER**

Prior to commencing any periodic cleaning or servicing always ensure the supply to the heater is completely isolated, BN Thermic Electric heaters are factory assembled and tested they are non user serviceable.

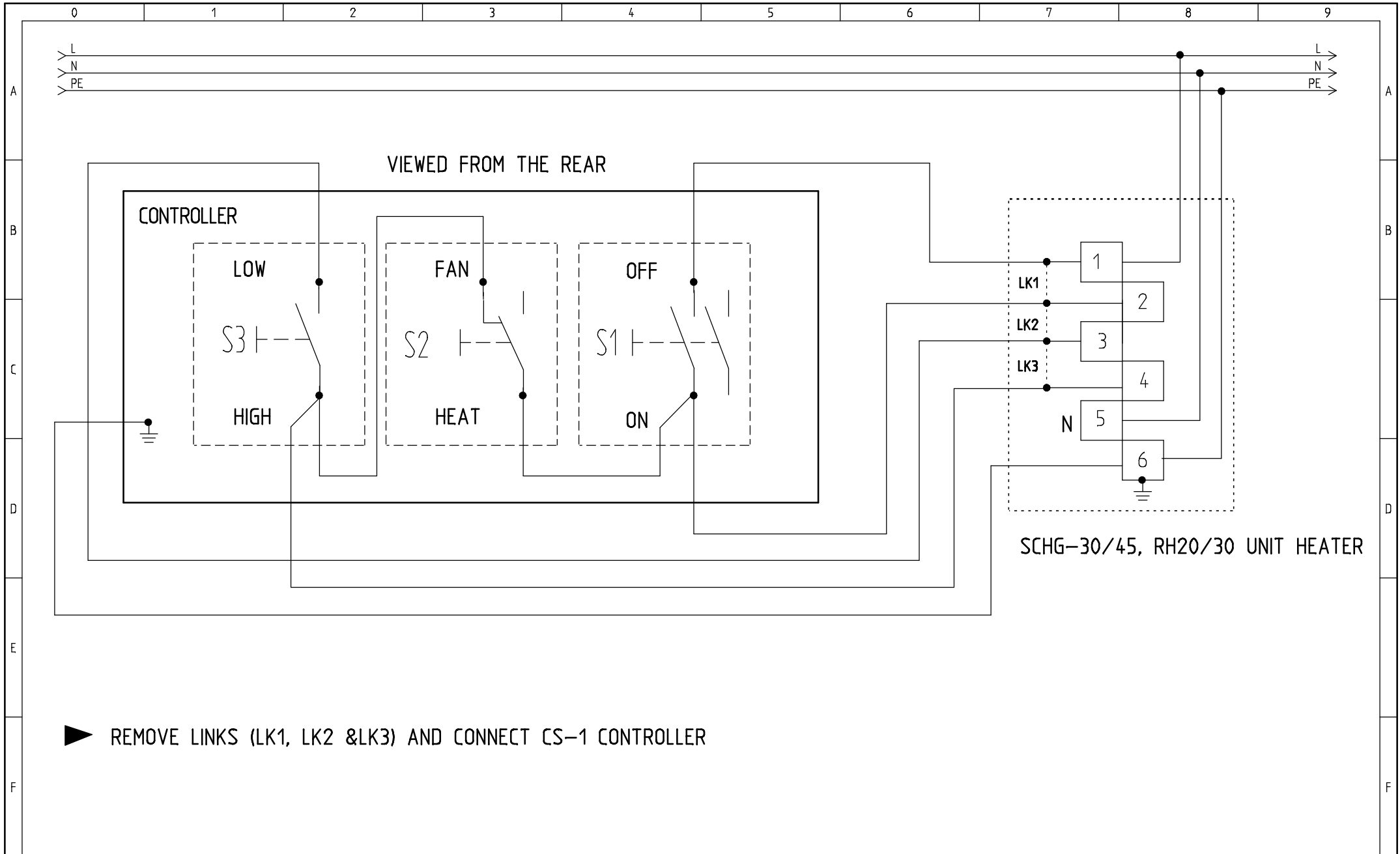
The heaters are intended to operate for many years, problem free.

All moving parts are factory lubricated and therefore should require no service.

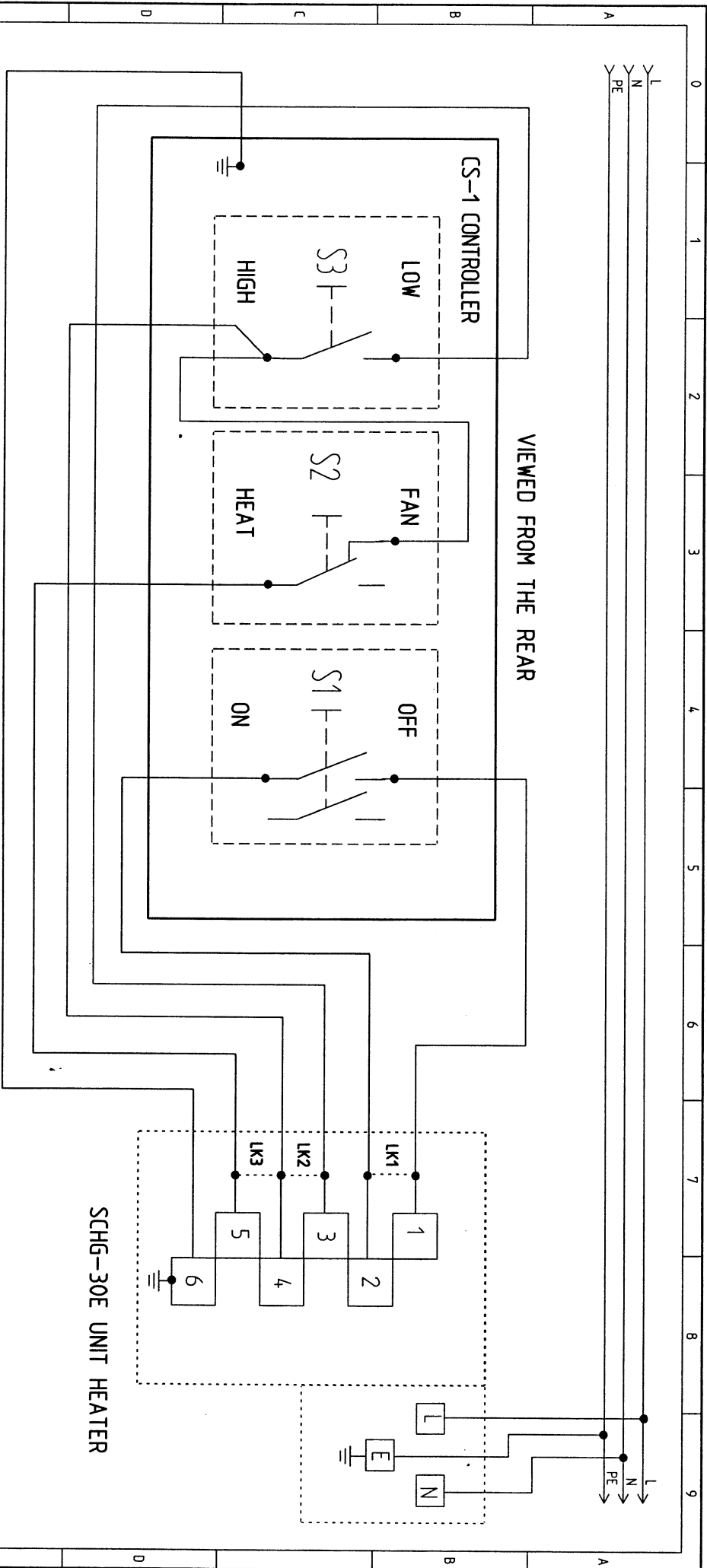
Maintenance is limited to keeping both the inlet and outlet areas free from any accumulation of dust or any other foreign materials. This is especially important immediately before the heating season. Any dust build up can be loosened using a brush and a vacuum cleaner applied to the airways to ensure completed removal of any dust. When the heater is first turned on after cleaning an unusual odour may be noted this is due to the dust particles which inevitably will be disturbed and will be burnt off from the heating element.

If in any doubt always consult a qualified electrician for advice.

**WARRANTY** - Your BN Thermic Heater is guaranteed for the period of one year from the date of purchase. We will repair or replace at our discretion any part found to be defective. BN Thermic cannot assume any consequential liability. This guarantee in no way prejudices your rights under common law and is offered as an addition to consumer liability rights.



▶ REMOVE LINKS (LK1, LK2 & LK3) AND CONNECT CS-1 CONTROLLER



▶ REMOVE LINKS (LK1, LK2 & LK3) AND CONNECT CS-1 CONTROLLER



BN THERMIC LTD  
 34, Stephenson Way, Crowley, RH10 1TN, UK  
 Tel: +44(0)1293 547 361 Web: www.bnthermic.co.uk

CONNECTION DIAGRAM FOR SCHG-30E  
 SHOWING OPTIONAL CONTROLLER

Project:	CS-1	Drawing no.:	W-CS-1-006	Int.:	MS	Rev.:	2	Sheet:	1
Date:	07/01/09	Function:	=	Location:	+	Total sheets:	1	Next sheet:	