

POWER FREELIGHT SYSTEM



PLEASE READ THESE INSTRUCTIONS CAREFULLY BEFORE INSTALLATION
LEAVE A COPY FOR THE USER / MAINTENANCE ENGINEER FOR FUTURE REFERENCE

FEATURES

- Aurora Freelight System socket outlets & switches are suitable for installation under kitchen cabinets, shelves or directly on worktops. Profile is compatible with entire Freelight System.

IMPORTANT INSTALLATION INFORMATION

- Installation should be carried out in accordance with the latest edition of the I.E.E. Wiring Regulations (BS7671) and taking into consideration the latest Building Regulations. If in doubt, consult a qualified electrician.
- **IMPORTANT.** Ensure that ALL electrical connections are tight with no loose strands, including factory made connections.
- Before commencing installation or maintenance, ensure electricity is switched off at the mains.
- Maximum Voltage – 240V 50Hz AC. (For 45A Cooker Switches, 20A & 10A Switches and 13A Sockets & Switched Fused Spurs only)
- 10-Amp X-rated switches are suitable for switching lighting or small appliance loads. They **MUST NOT** be used to switch 13-Amp socket outlets or other loads exceeding 10-Amps.
- This system is for indoor use only.
- Do not remove any pre-wired cables.
- These fittings must be earthed.

IMPORTANT USER INFORMATION

- There are no user serviceable parts in this system.

INSTALLATION INSTRUCTIONS

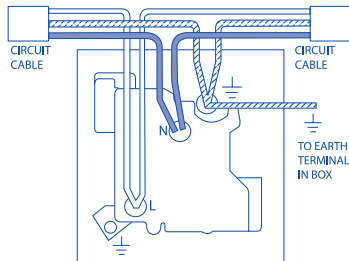
1. Loosen the cover fixing screws (Fig.1 overleaf) and remove mounting bracket by lifting cover & pulling away.
2. Select the required position. Using the mounting template in the box, mark, drill and fix the bracket with the screws/wall plugs provided (Fig.2 overleaf). Ensure that the metal mounting plate is positioned with no gaps around the edge. Beware of joists, water pipes and electric cables when drilling holes.

Mains Voltage Sockets and Switches

1. Attach supply cables to sockets and switches as shown below:- (Brown – Live ; Green/Yellow – Earth ; Blue – Neutral)

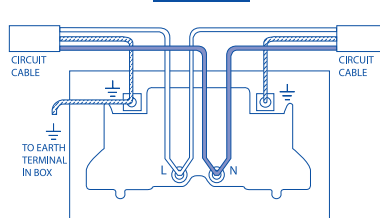
13A SINGLE SWITCHED SOCKET OUTLET -

AU-KLF203



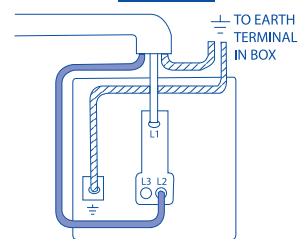
13A TWIN SWITCHED SOCKET OUTLET

AU-KLF204



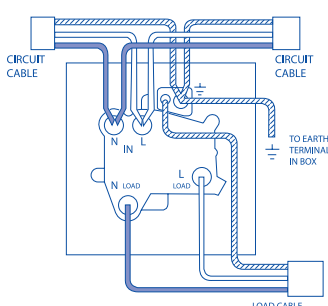
10A X-RATED SWITCH

AU-KLF206



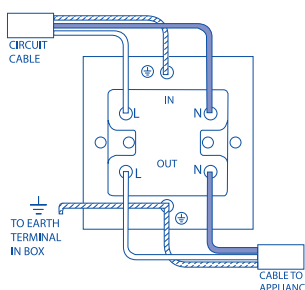
13A SWITCHED FUSED SPUR

AU-KLF207 / AU-KLF213

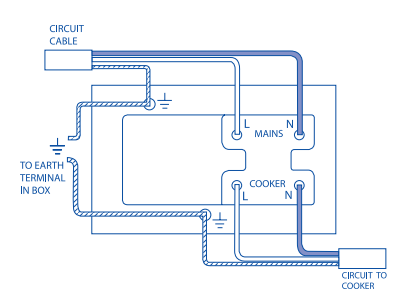


SINGLE 45A COOKER SWITCH

AU-KLF212

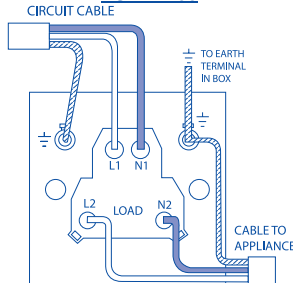


45A COOKER SWITCH & 13A SWITCHED SOCKET OUTLET - AU-KLF209



20A DOUBLE POLE SWITCH

AU-KLF208



— BROWN
— BLUE
— GREEN/ YELLOW SLEEVING

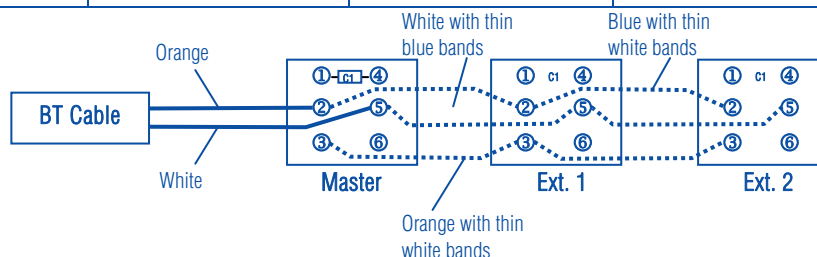
2. Replace main body of the fitting, ensuring that cables are not trapped between the cover and the base plate (Fig.3 below).
3. Tighten cover fixing screws (Fig.4 below) and switch on the power supply.

Telephone Secondary Sockets

1. Attach supply cables to the numbered terminal block connections on the circuit board according to the table below :

Pin	Use	Master Socket (BT, etc.)	1 st Secondary Socket	2 nd Secondary Socket, etc	Pin
1	Not used	Green/White	Green/White	Green/White	1
2	'B' wire (-50v to earth)	Blue/White	Blue/White	Blue/White	2
3	Bell wire	Orange/White	Orange/White	Orange/White	3
4	Earth (PABX use only)	White/Orange	White/Orange	White/Orange	4
5	'A' wire (0V to earth)	White/Blue	White/Blue	White/Blue	5
6	Not used	White/Green	White/Green	White/Green	6

Example of a Typical Connection

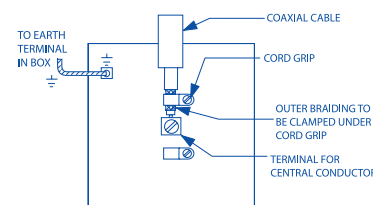


Note : A domestic single line telephone installation will have one master socket which is supplied by the service provider (BT, cable company, etc). Additional secondary sockets are wired off the master as shown above. The colour codes shown are the standard, but may differ in some existing installations.

TV COAXIAL SOCKET AU-KFL213

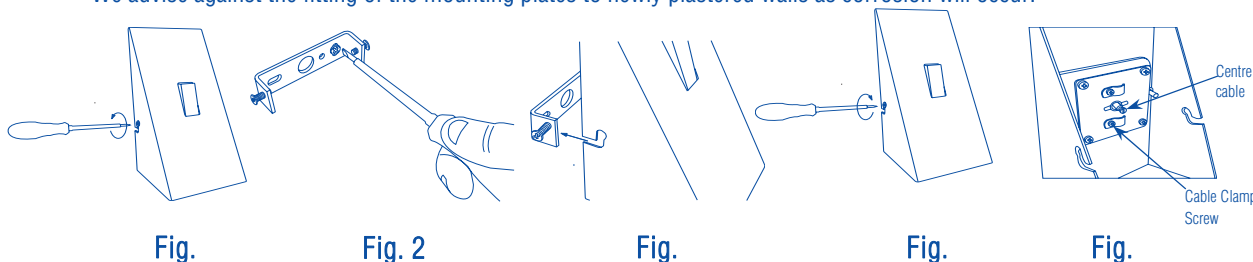
TV Sockets

1. It is important to keep the two different wire types within the cable separate from each other.
2. Strip back 50mm of the coaxial cable outer sheath. (Do not cut deep enough to cut through the braid underneath). Remove this section of the outer sheath and push the braided wire back up to the top of the inner sleeve, causing it to scrunch up at the end.
3. Strip back the inner insulation leaving 10mm of the inner solid core wire bare.
4. Loosen one of the cable clamp screws on the rear of the fitting (Fig. 5 below).
5. Loosen the centre cable screw (Fig.5 below).
6. Slide the coaxial cable into position with the centre conductor wire under the centre screw and the scrunched braided wire under the outer cable clamp (see diagram Right).
7. Tighten both screws. Check that no loose strands can touch other contact points or casing.



GENERAL - For all mounting plates :

- We advise against the use of abrasive cleaners as it will damage the lacquer allowing water to the stainless steel.
- We advise against the fitting of the mounting plates to newly plastered walls as corrosion will occur.



Environmental Protection (W.E.E.E.) – Aurora's WEEE Reg.No. WEE/BG0130YX



Waste Electrical & Electronic Equipment Regulations (WEEE) requires that any of our products showing this marking (left) must not be disposed of with other household or commercial waste. Aurora does not levy any WEEE disposal charges to its customers for affected WEEE related products. To prevent possible harm to the environment or human health from uncontrolled waste disposal, please separate any such product from other waste types and recycle it responsibly at your local facilities. Check with your Local Authority, Recycling Centre or retailer for recycling advice. If, when you purchased any Aurora product, your supplier included a WEEE disposal fee, you should then contact your supplier for advice on his takeback of the product for the correct disposal.

GUARANTEE

This product is guaranteed in the UK for a period of 1 year from the date of purchase. The guarantee is invalid in the case of improper use, installation, tampering, removal of the Q.C. date label, installation in an improper working environment or installation not according to the current edition of the I.E.E. Wiring Regulations (BS7671). Should this product fail during the guarantee period it will be replaced free of charge, subject to correct installation and return of the faulty unit. Aurora does not accept responsibility for any installation costs associated with the replacement of this product. Your statutory rights are not affected. Aurora reserves the right to alter specifications without prior notice.

Aurora Limited 16 Alban Park Hatfield Road St Albans Hertfordshire AL4 0JJ United Kingdom

Website: www.aurora.eu.com

Document version - AU-POWER_FREELIGHT_V1_09.doc